

## INSPECTION

### 1. Left side:

#### INSPECT MIRROR SWITCH CONTINUITY

Switch Position	Tester Connection	Specified Condition
UP	4 – 8, 6 – 7	Continuity
DOWN	4 – 7, 6 – 8	Continuity
LEFT	5 – 8, 6 – 7	Continuity
RIGHT	5 – 7, 6 – 8	Continuity

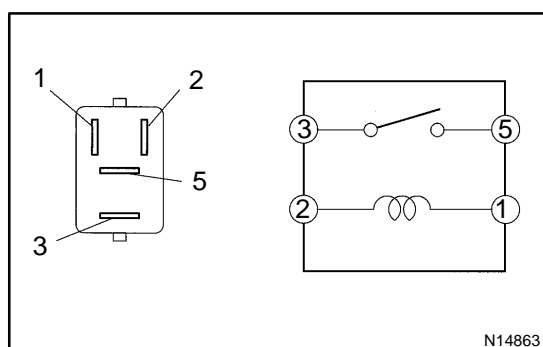
If the continuity is not as specified, replace the switch.

### 2. Right side:

#### INSPECT MIRROR SWITCH CONTINUITY

Switch Position	Tester Connection	Specified Condition
UP	3 – 8, 6 – 7	Continuity
DOWN	3 – 7, 6 – 8	Continuity
LEFT	5 – 8, 6 – 7	Continuity
RIGHT	5 – 7, 6 – 8	Continuity

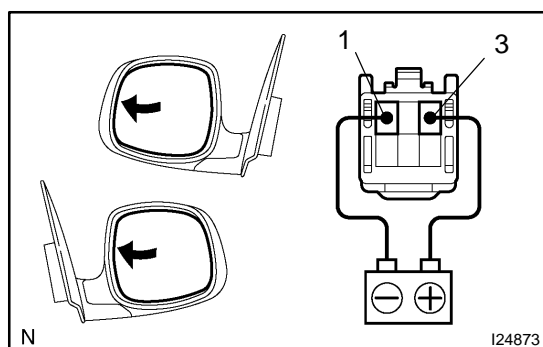
If the continuity is not as specified, replace the switch.



### 3. INSPECT ACC CUT RELAY CONTINUITY

Tester Connection	Specified Condition
3 – 5	No continuity
3 – 5	Continuity (When battery voltage is applied to terminals 1 and 2)

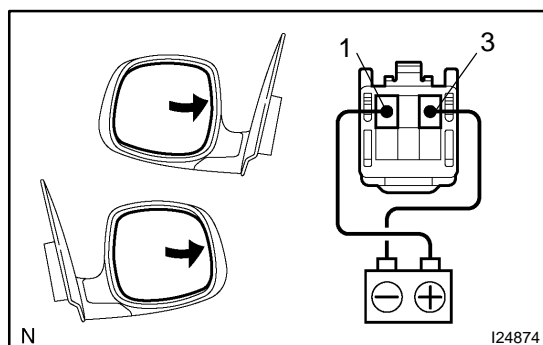
If the continuity is not as specified, replace the relay.

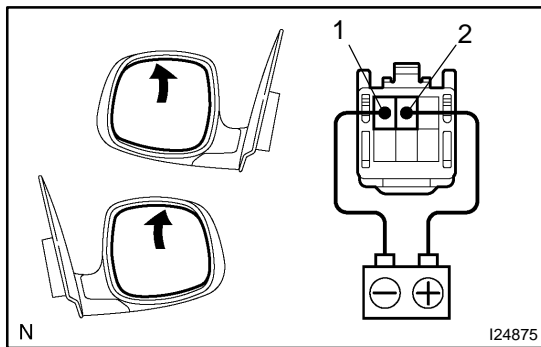


### 4. INSPECT MIRROR MOTOR OPERATION

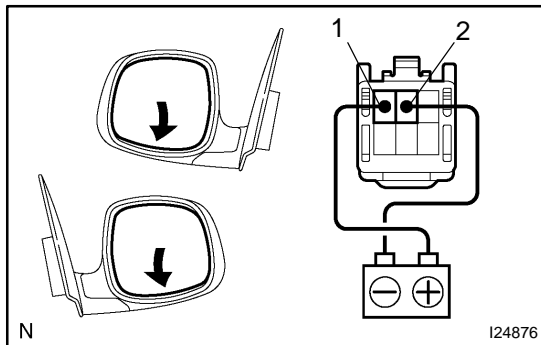
- (a) Connect the positive (+) lead from the battery to terminal 3 and negative (-) lead to terminal 1. Check that the mirror turns leftward.

- (b) Reverse the polarity, check that the mirror turns rightward.





- (c) Connect the positive (+) lead from the battery to terminal 2 and the negative (-) lead to terminal 1. Check that the mirror turns upward.



- (d) Reverse the polarity, check that the mirror turns downward.  
If operation is not as specified, replace the mirror assembly.